

The Accountability Pillar shows our District's progress on a variety of measures monitored by Alberta Education.

A
c
h
i
e
v
e
m
e
n
t

I
m
p
r
o
v
e
m
e
n
t

Safe and Caring	Blue	Yellow
Program of Studies	Blue	Yellow
Education Quality	Blue	Green
Drop Out Rate	Blue	Yellow
High School Completion (3 Years)	Green	Orange
PAT Acceptable	Yellow	Orange
PAT Excellence	Yellow	Orange
Diploma Acceptable	Green	Orange
Diploma Excellence	Yellow	Orange
Diploma Exam Participation Rate (4+ Exams)	Yellow	Orange
Rutherford Scholarship Eligibility Rate	Yellow	Orange
Transition Rate (6 Years)	Yellow	Orange
Work Preparation	Blue	Yellow
Citizenship	Blue	Green
Parental Involvement	Blue	Yellow
School Improvement	Blue	Orange

Very High/Improved Significantly

High/Improved

Intermediate/Maintained

Low/Declined

Very Low/Declined Significantly

Welcome Horizon School Division is an inclusive learning community that engages and empowers all learners for success.

Quick Facts

- 3,500 students
- 40% English Language Learners
- 450 dedicated staff serving our students
- 15 regular schools,
- 1 Christian Alternative School
- 4 outreach schools,
- 19 Hutterian Brethren schools,
- 1 Sports Academy

Cross-curricular **COMPETENCIES**

- Literacy and Numeracy
- Critical thinking
- Communication
- Problem Solving
- Collaboration
- Managing information
- Cultural and global citizenship
- Creativity and innovation
- Personal growth and well-being

Passionately engaging learners who confidently pursue continual improvement now and in the future as contributing global citizens



OUR CHALLENGE

- Ensuring all students residing within our jurisdiction receive a high quality education

OUR ACCOMPLISHMENTS

(The comparison below is to previous 3 year averages)

All learners leaving school are contributing global citizens.

- Excellence in Student Learning: 90.5% of students meet acceptable standard on diploma examinations (7.4% above provincial average).
- High School Completion: high school completion rate is 83.5% (6% above the provincial average).
- High Quality Safe Learning Environments: 93.4% of stakeholders believe schools are safe and caring (4.1% above provincial average).
- Life Long Learning and Citizenship: 88.5% of stakeholders felt students exhibited the characteristics of good citizens (5% above provincial average)
- Continuous Improvement: 86.8% of stakeholders felt schools are improving (5.8% above provincial average)
- High Stakeholder Support: 86.5% of parents feel they have opportunities to be involved (5.4% above provincial average)

ENGAGING OUR STAFF

- Strong core instruction that develops student competencies (Ministerial Order #001/2013).

MEETING THE NEEDS OF OUR STUDENTS

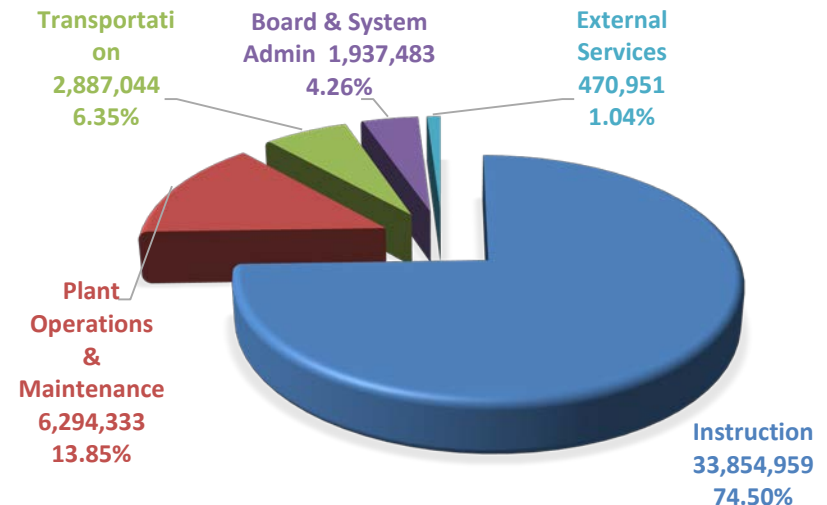
- Employ a Response to Intervention Framework to meet the needs of all students.

ENGAGING OUR COMMUNITY

- Student success is a collective endeavor.
- Parents continue to be engaged via participation in jurisdiction committees (e.g. policy and budget).
- Parents and the community are also informed via websites, social, and regular media

STEWARDSHIP OF RESOURCES

- The cost of educating our students in 2018-19 was **\$47,151,243**. **75.11% (\$35,417,208)** of total funds was spent directly on student instruction. The single largest expenditure was for staff salaries and benefits which accounted for **71.42%** of the budget.



6302 - 56 Street | Taber, AB T1G 1Z9 | 403.223.3547

More detailed information can be obtained by contacting Wilco Tymensen (Superintendent) at 403-223-3547 or visiting Three Year Education Plan <https://www.horizon.ab.ca/download/223272>
Audited Financial Statement <https://www.horizon.ab.ca/download/223242>, or
Budget <https://www.horizon.ab.ca/download/223242>